

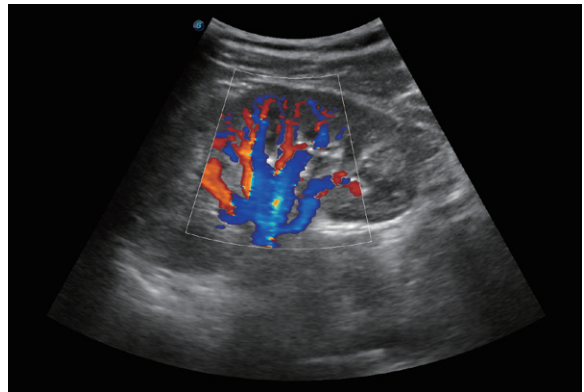
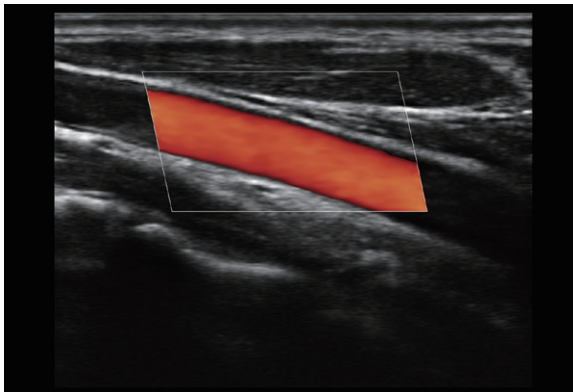
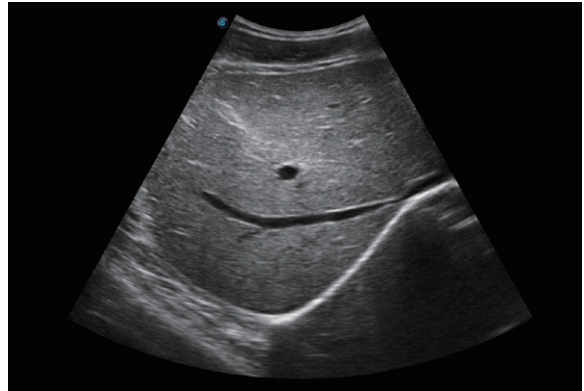
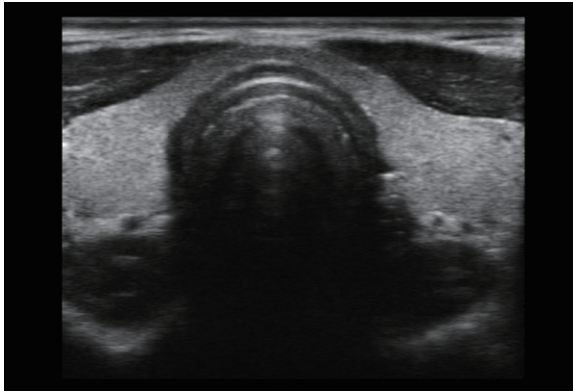
SonoScape

E1 EXP

Bearing the mission of setting new standards in price and performance, SonoScape developed a brand new diagnostic ultrasound system, which will give you easy medical solutions for your daily practice. With a practical compact design, and stable 2D and color performance, E1exp will go beyond your expectations but stay within your budget.



Easy Solutions for Your Needs



Efficient Diagnosis

- μ -Scan, Speckle Reduction & Edge Enhancement
- Spatial Compound Imaging
- PIH - Pure Inversion Harmonic
- Wide Scan - Enlarged Image Area
- Tissue Specific Imaging
- SR Flow

Ergonomic Designs

- Up to 2 Transducer Ports
- Light Weight and Compact
- 15.6 inch Anti-flickering HD LED Screen
- Tilting Monitor Angle Adjustment
- Backlit Keyboard and Intelligent Panel
- Long-lasting Battery for 90mins

Ease of Use

- Quick Boot Up
- Auto Brightness Adjustment
- Auto Image Optimization
- Auto IMT
- Auto Trace

Equipped Accessories

- Wi-Fi and Bluetooth Available
- DICOM
- 500GB Hard Disk
- Height Adjustable Trolley
- Durable, Carry-on Site Suitcase