



**SonoScape Ultrasound**  
Elevating Experiences with  
Aerospace-Grade Precision



**SonoScape**

SonoScape Medical Corp.

2F, 12<sup>th</sup> Building, Shenzhen Software Park Phase II, Keji  
Middle 2<sup>nd</sup> Road, Nanshan District, Shenzhen 518057,  
Guangdong, China  
Tel: +86-755-26722890 Fax: +86-755-26722850  
Email: market@sonoscape.net www.sonoscape.com

© 2023 SonoScape Medical Corp.  
All rights are reserved.

SonoScape Medical reserves the right to change the above  
information and discontinue any product at any time  
without prior notification and will not be liable for any  
consequences resulting from the use of this publication.

U-S80E20230920

**SonoScape**



From Boundless Exploration  
to Infinite Horizons



# C-Field+™ PLATFORM

Experience Innovation Redefined



- INNOVATION
- EXPLORATION
- EXTREME
- INTELLIGENCE

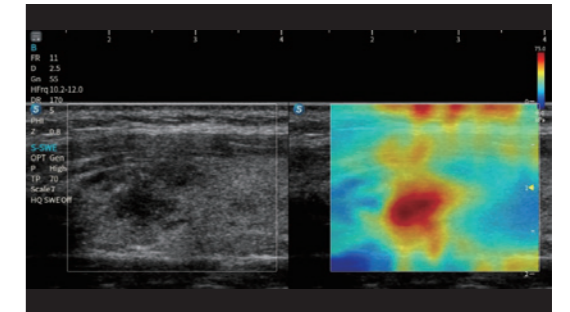
The S80 Elite is a new premium ultrasound product developed by SonoScape based on the C-Field+ platform, making significant breakthroughs in image recognition, advanced functionality. It offers a multidisciplinary integrated intelligent clinical solution.



# Unparalleled Functionality, All-in-One

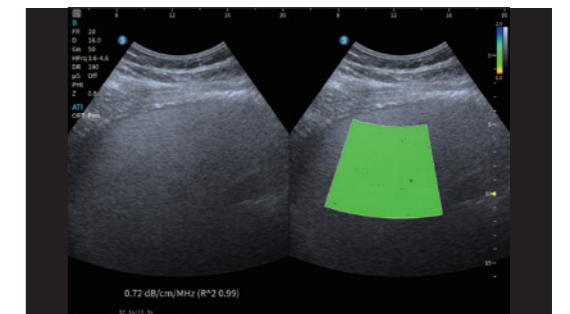
## Shear Wave Elastography

Empowering Quantitative Assessment for Liver Fibrosis, Thyroid, and Breast Lesion Characterization. Supporting both P-SWE and S-SWE methods, displaying reliability indices enhances clinical diagnostic confidence, enabling accurate and informed decision-making.



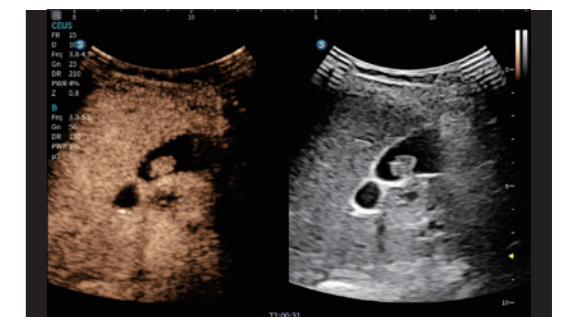
## Fatty Liver Attenuation Imaging

The degree of fatty liver degeneration is quantitatively assessed by calculating the attenuation coefficient, with support for confidence display.



## Contrast-Enhanced Ultrasound Imaging

Supports high-frame-rate contrast imaging, with an increased frame rate to more dynamically display the perfusion process of lesions.

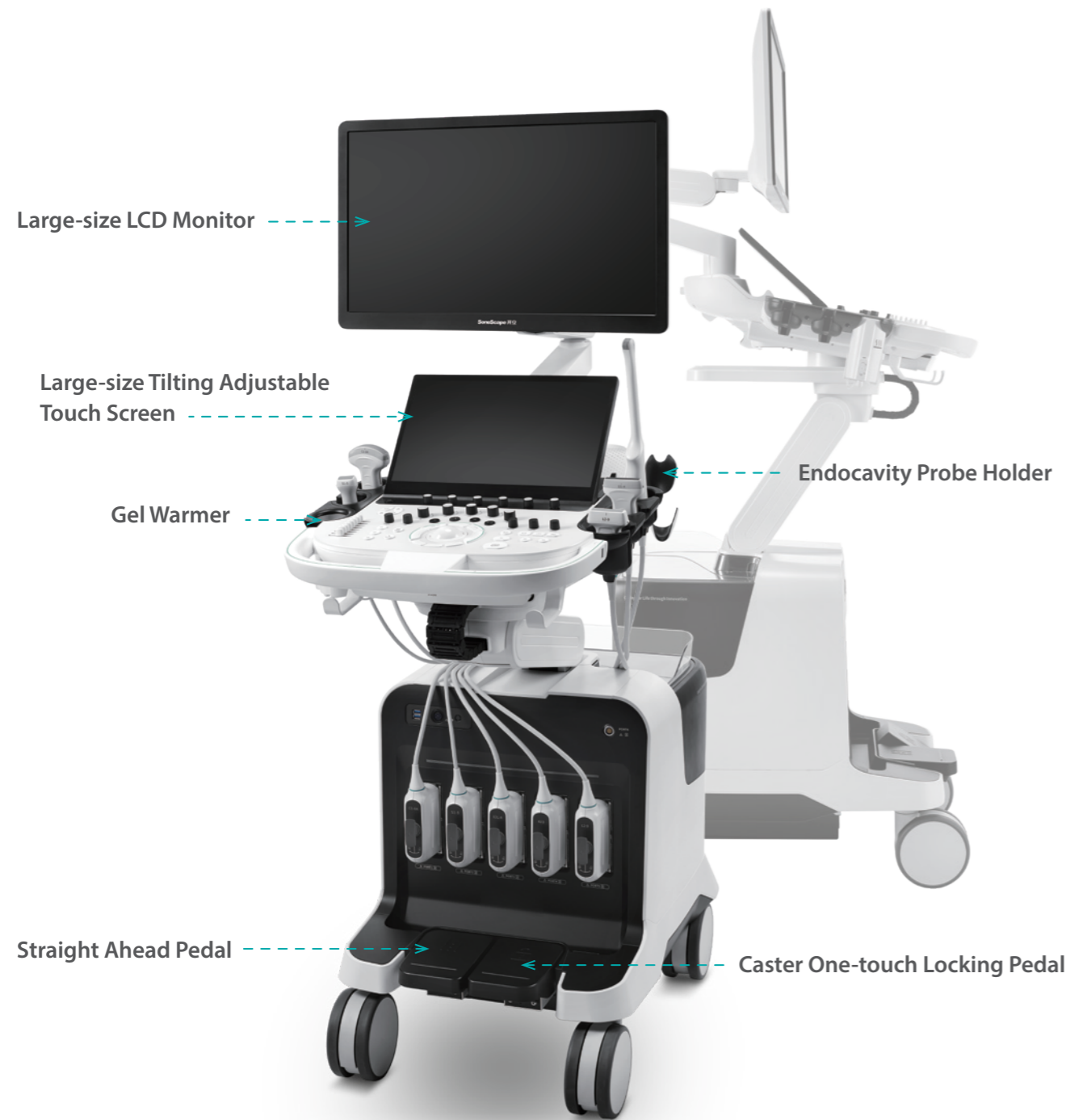


## Fusion Imaging

Built-in magnetic sensor in the probe, eliminating the need for an external magnetic sensor for stand interconnection. By employing image registration technology, ultrasound data is fused with CT/MR data to achieve simultaneous display. This integration facilitates comprehensive disease analysis by physicians.



# Conformity and User-friendly Operation



Intelligent Buttons



Anti-misoperation Button Design



Physical Keypad



Zircon Keystroke



Anti-Scratch Panel Technology



Handle Laser Engraved with a Water Ripple Texture